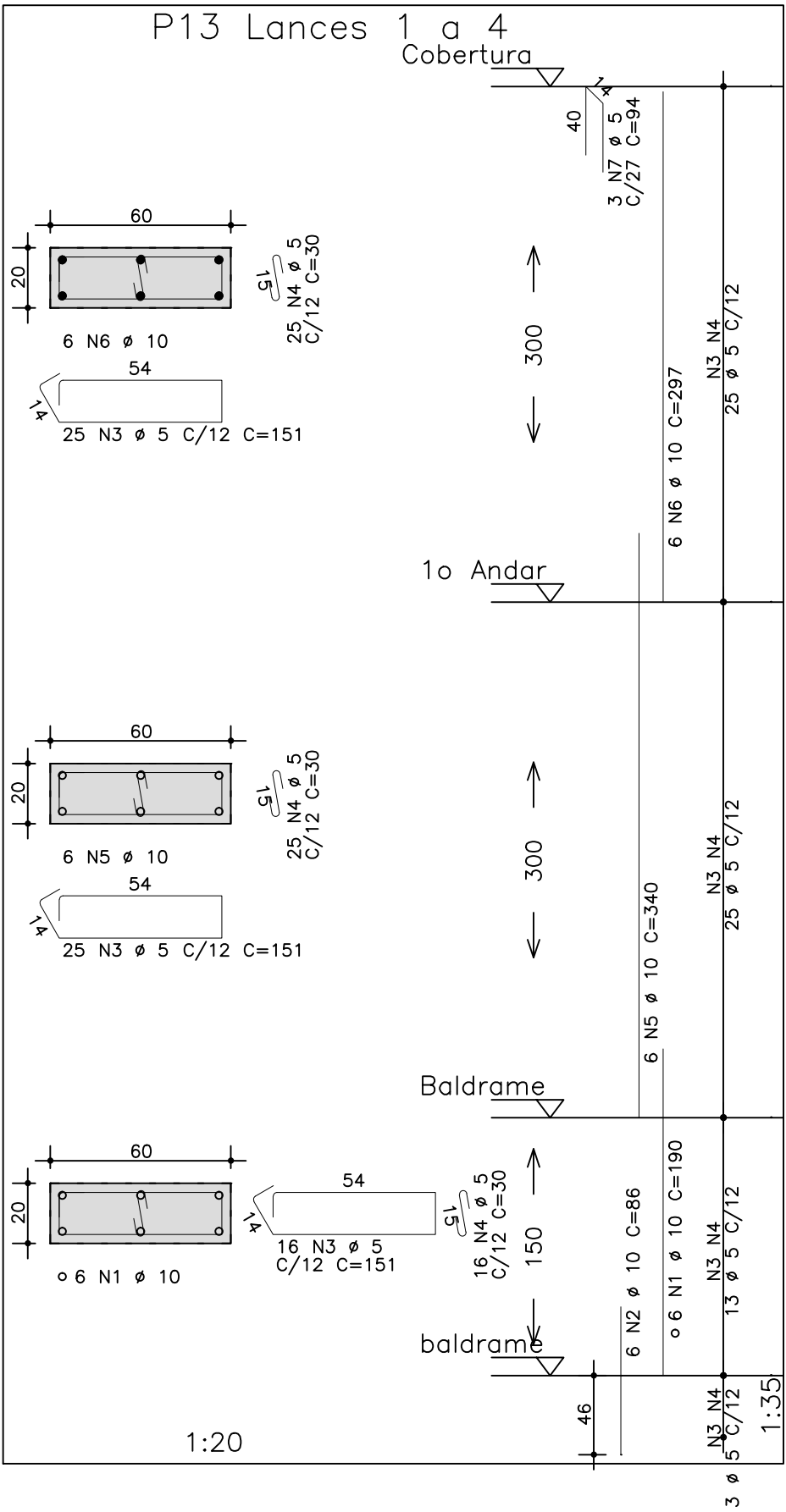
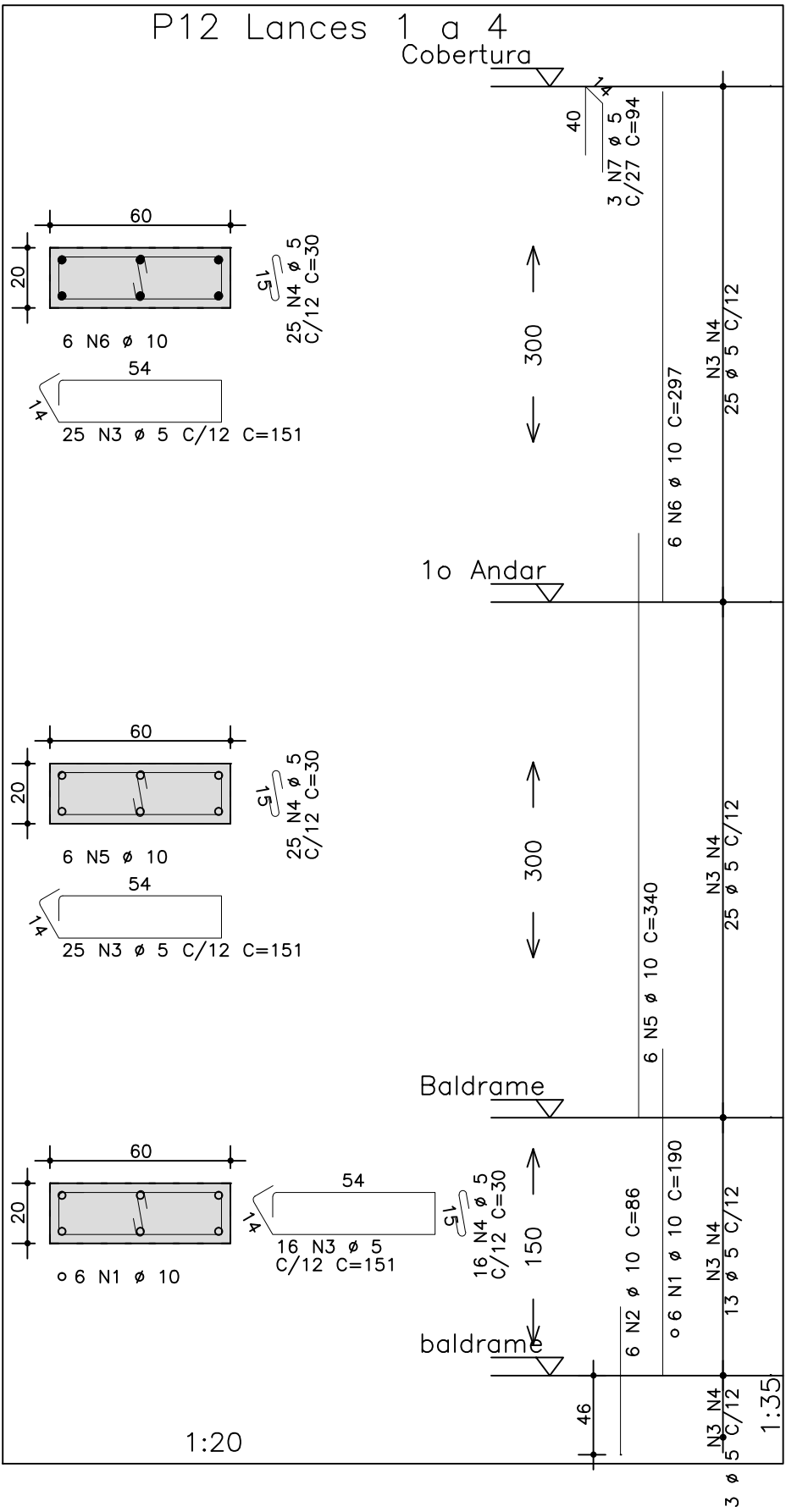
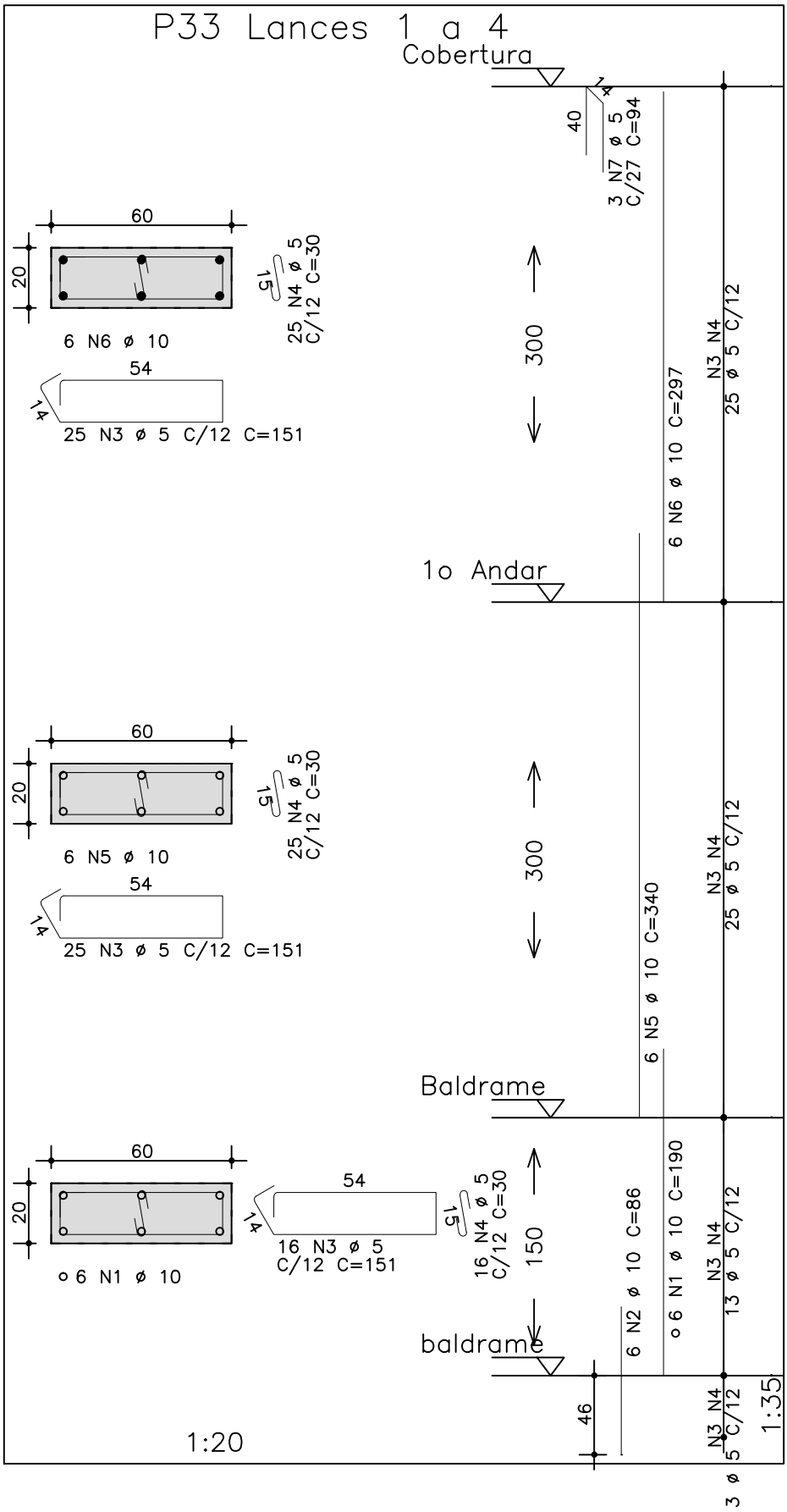
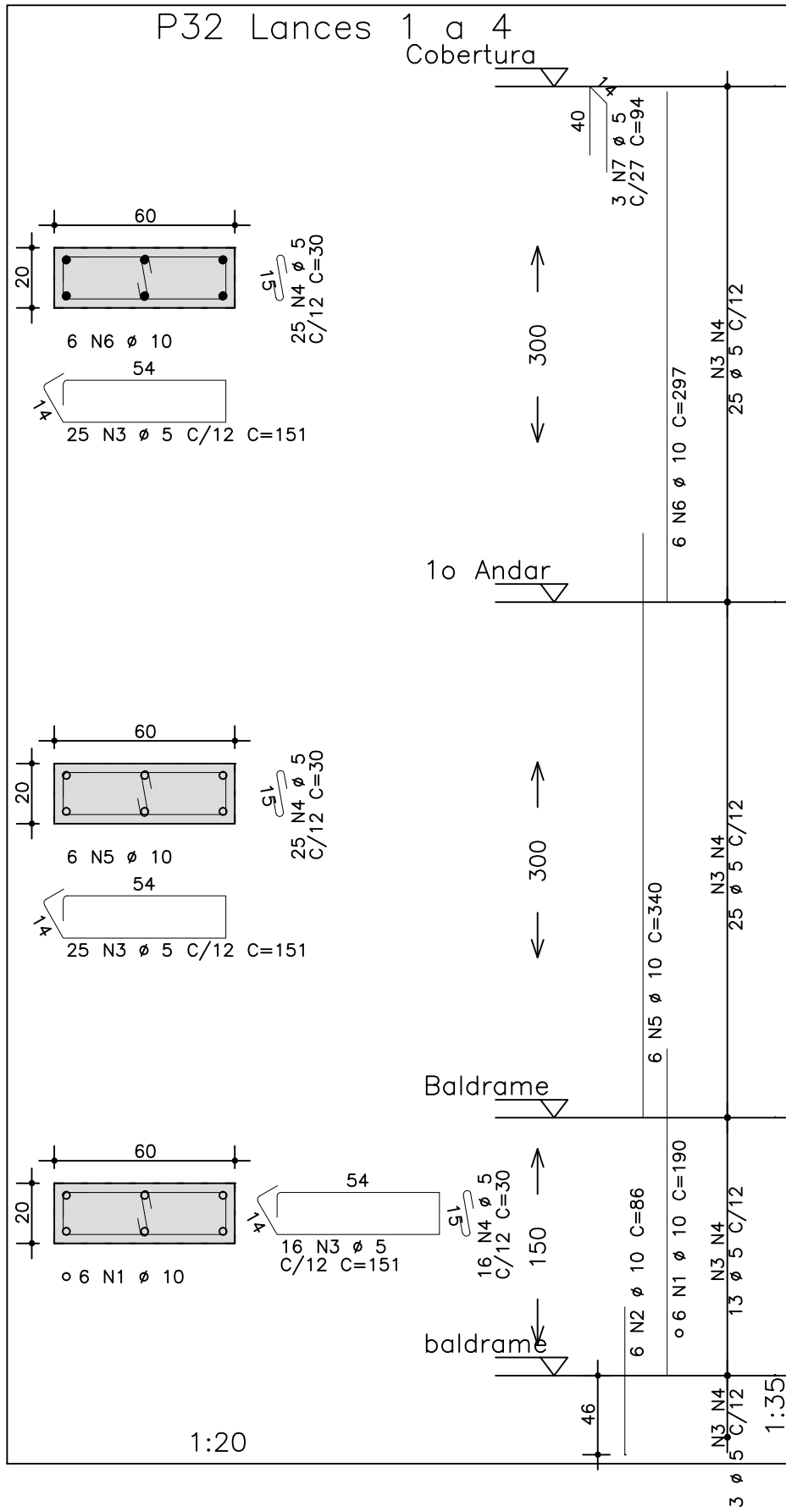


	AÇO	POS	BIT (mm)	QUANT	COMPRIMENTO	
					UNIT (cm)	TOTAL (cm)
P12	Lances 1	a 4				
	50A	1	10	6	190	1140
	50A	2	10	6	86	516
	60B	3	5	66	151	9966
	60B	4	5	66	30	1980
	50A	5	10	6	340	2040
	50A	6	10	6	297	1782
P13	Lances 1	a 4				
	50A	1	10	6	190	1140
	50A	2	10	6	86	516
	60B	3	5	66	151	9966
	60B	4	5	66	30	1980
	50A	5	10	6	340	2040
	50A	6	10	6	297	1782
P26	Lances 1	a 4				
	50A	1	10	6	190	1140
	50A	2	10	6	86	516
	60B	3	5	66	151	9966
	60B	4	5	66	30	1980
	50A	5	10	6	340	2040
	50A	6	10	6	297	1782
P27	Lances 1	a 4				
	50A	1	10	6	190	1140
	50A	2	10	6	86	516
	60B	3	5	66	151	9966
	60B	4	5	66	30	1980
	50A	5	10	6	340	2040
	50A	6	10	6	297	1782
P28	Lances 1	a 4				
	50A	1	10	6	190	1140
	50A	2	10	6	86	516
	60B	3	5	66	151	9966
	60B	4	5	66	30	1980
	50A	5	10	6	340	2040
	50A	6	10	6	297	1782
P31	Lances 1	a 4				
	50A	1	10	6	190	1140
	50A	2	10	6	86	516
	60B	3	5	66	151	9966
	60B	4	5	66	30	1980
	50A	5	10	6	340	2040
	50A	6	10	6	297	1782
P32	Lances 1	a 4				
	50A	1	10	6	190	1140
	50A	2	10	6	86	516
	60B	3	5	66	151	9966
	60B	4	5	66	30	1980
	50A	5	10	6	340	2040
	50A	6	10	6	297	1782
P33	Lances 1	a 4				
	50A	1	10	6	190	1140
	50A	2	10	6	86	516
	60B	3	5	66	151	9966
	60B	4	5	66	30	1980
	50A	5	10	6	340	2040
	50A	6	10	6	297	1782
P111	Lances 1	a 3				
	50A	1	10	8	190	1520
	50A	2	10	8	86	688
	60B	3	5	41	161	6601
	60B	4	5	82	25	2050
	50A	5	10	8	297	2376
	60B	6	5	4	89	356

RESUMO AÇO CA 50-60			
AÇO	BIT (mm)	COMPR (m)	PESO (kg)
60B	5	1068	165
50A	10	484	299
Peso Total		60B =	165 kg
Peso Total		50A =	299 kg



fcck 250. kg/cm2

<b>S</b> Schuring & Schuring		<b>Schuring &amp; Schuring Ltda.</b> Escritório Técnico B.E.SCHURING - Projetos de Engenharia Av. XV de Novembro, 489 - Porto 2o. Andar - Cuiabá MT Fone:(065) 321.8999 - Fax:(065) 623.5066 - Email - schuring@terra.com.br	
PROJETO:	PROPRIETARIO: PREFEITURA MUNICIPAL VARZEA GRANDE MT	OBRA: EMEB ALINO FERREIRA MAGALHAES	
	RESP. TEC. EXECUCAO:	END.: AV. Verdão esq. c/ Rua "B" PARQUE DO LAGO - VARZEA GRANDE	
AUTORES DO PROJETO:		ASSUNTO: DET. ARM. PILARES	
Benedito Eliseu Schuring Eng.Civil- CREA 715/D-MT		PEÇAS DETALHADAS P12 Lances 1 a 4 / P13 Lances 1 a 4 P26 Lances 1 a 4 / P27 Lances 1 a 4 P28 Lances 1 a 4 / P31 Lances 1 a 4 P32 Lances 1 a 4 / P33 Lances 1 a 4 P111 Lances 1 a 3	
Andre Luiz Schuring Eng.Civil- CREA 8697/D-MT		FOR: 250 ESCALA: 1:50	FOLHA No. 16